




CALIBER
COMPANY

CHALET AT PRAIRIE TRAIL



\$1,650 – \$1,800

 1400 SW 11TH
STREET, ANKENY,
IA 50023

 DOGS OK

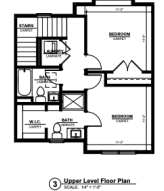
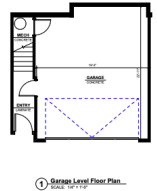
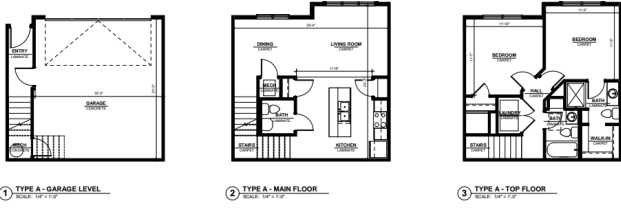
 CATS OK

 2 BEDROOM

 2.5 BATHROOMS

 ATTACHED GARAGE

This residential property in Ankeny, Iowa has 2 bedrooms, 2.5 bathrooms, 1,200 square feet of living space, an attached 2 car garage, solid surface flooring, quartz countertops, and stainless-steel appliances.



TYPE A

PATIO UNIT



COMMUNITY AMENITIES

- Trash Included
 - Lawn Care Included
 - Snow Removal Included
 - Pet Friendly (with restrictions)
 - Prompt maintenance team with fast request resolution
 - Responsive property management with online rent payment and service options
 - Scheduled furnace filter replacement during residency
 - Annual preventative maintenance
-

UNIT FEATURES/ AMENITIES

- Attached 2 Car Garage Included
 - Stainless Steel Appliances
 - Quartz Countertops
 - Lawn
 - Porch
 - Dishwasher
 - Washer/Dryer
 - Heating
 - Cable Ready
 - Air Conditioning
 - Pet Friendly (with restrictions)
-

LOCAL COMMUNITY HIGHLIGHTS

- Ankeny Prairie Trail
- Shopping and Dining
- Recreational Amenities
- Parks and Green Spaces
- Golf Courses
- Local Businesses
- Community Events

- Friendly Neighborhoods

LEASING AGENT



PROPERTY MANAGER

JESSI HATTING

515-333-4403 ext 2006